



Z Y E



THE FIRST  
SMARTLASER  
IN THE WORLD.

Z Y E



LEARN MORE ABOUT **SMARTLASER** TECHNOLOGY, WHICH WILL **TRANSFORM YOUR MEDICAL PRACTICE** THROUGH **REAL-TIME TECHNICAL ASSISTANCE MONITORING** AND CUSTOM **MANAGEMENT REPORTS.**



**SMARTLASER IS CARING FOR YOUR DEVICE AND LEAVING YOU WORRY-FREE.**

- Sensors to monitor device and doctor's office operation;
- Automatic management center for preventive maintenance;
- Problem solving agility: intelligent online diagnostic system;
- Maintenance history reports available online.

**SMARTLASER IS DELIVERING DATA THAT HELPS MANAGE THE PROFITABILITY OF THE DOCTOR'S OFFICE**

- Indicators with overall occupancy rate and shots per handpiece;
- View of the device's highest frequency of use and indication offerings;
- Cross-reference with treatment history, by usage session;
- Different chart types and selectable history periods;
- Date and time use control with device parameter records.



THE FIRST AND ONLY LASER  
PLATFORM ON THE MARKET  
**FULLY CONNECTED**  
TO YOUR MEDICAL PRACTICE.

**ZYE** COMBINES **POWER,**  
**VERSATILITY** AND **PROFITABILITY**  
IN AN ENTIRE NEW AND EXCLUSIVE  
GENERATION OF SMARTLASER  
**PLATFORMS.**



# ZYE OFFERS OPTIONS THAT REALLY ADD TO YOUR MEDICAL PRACTICE

## ZYE YAG 1,064 nm

LASER platform with a high-power, versatile YAG cavity and almost 20 spots available in 3 different operating modes for multiple indications.

## ZYE ALX 755 nm

LASER platform with a highly versatile ALEXANDRITE cavity for hair removal, vascular lesions and the exclusive DYNAMICS mode for spot removal and lightening.



**8-18/HR ALX/YAG HANDPIECE**  
HAIR REMOVAL

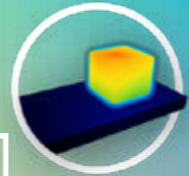
**EXCLUSIVE FLAT-FRAME® OPTICAL TECHNOLOGY:**

With microlenses for uniformity and homogenization of the top-hat beam, converting from a circular to a square format. The square beam increases the density of coverage per region without leaving untreated areas, ensuring the patient's safety and increasing the speed of the procedure by 25% due to the spot format.

**DIGITAL OPTICAL ZOOM ZYE TELESCOPE®** integrated to the handpiece, with automatic spot size adjustment and interface parameterization.

**COOL-&-CLEAR SIMULTANEOUS COOLING®**

A sapphire window increases treatment comfort and safety even in procedures with more aggressive parameters. COOL-&-CLEAR® technology also provides broad visibility of the treatment region, considerably increasing the usability of the handpiece in different areas of the body and for different indications.



**3-10/VL ALX/YAG HANDPIECE**  
VASCULAR LESIONS, LASER THERMAL PEELING

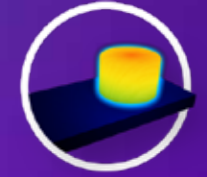
**DIGITAL OPTICAL ZOOM ZYE TELESCOPE®** integrated to the handpiece, with automatic spot size adjustment and interface parameterization.

**HOMOGENEOUS BEAM IN TOP-HAT FORM**, which avoids localized points of overheating, broadens the overall efficacy of the treatment due to the density of coverage and increases the safety of the procedure even further.



**COOL-&-CLEAR SIMULTANEOUS COOLING®**

A sapphire window increases treatment comfort and safety even in procedures with more aggressive parameters. COOL-&-CLEAR® technology also provides broad visibility of the treatment region, considerably increasing the usability of the handpiece in different areas of the body and for different indications.



**LASER GUIDE WITH CONTRAST AND INTENSITY ADJUSTMENT** which greatly facilitates visualization of the area and of vessels and veins when treating vascular lesions.

**5-15/LT YAG HANDPIECE**  
LASER TIGHTENING, LASER THERMAL PEELING, ONYCHOMYCOSIS

**EPIDERMAL COOLING ADAPTER** that allows the use of a coupled accessory device, increasing the procedure's profitability and expanding the LASER's usability even by a single operator.

**ACCUSENSE® MONITORING** an instantaneous monitoring system for surface temperature of the skin that ensures safety, adds repeatability and optimizes the results achieved.

**ACCUSENSE® TEMPERATURE INDICATOR** with a bar graph integrated into the handpiece, which facilitates the procedure and helps parameterize the treatment.

**3-24/HR ALX/YAG HANDPIECE**  
HAIR REMOVAL, ALEXANDRITE LASER PEEL

**EPIDERMAL COOLING ADAPTER** which allows the use of a coupled accessory device and does not require consumables, increasing the procedure's profitability and expanding the LASER's usability even by a single operator.

**HANDPIECE WITH MULTIPLE PLUG-AND-PLAY SPOTS**, with automatic recognition and a wide range of sizes available.

**ZYE IS MORE VERSATILE BECAUSE IT IS ALSO COMPATIBLE WITH THE BEST-SELLING BRAZILIAN LASER PLATFORM IN THE WORLD.**

ZYE® COUPLES ALL THE ETHEREA-MX® HANDPIECES AND OFFERS EXCLUSIVE FEATURES FOR **IPL-SQ®**, **DUALMODE®** AND **LONGPULSE®**.



IPL-SQ®



INTENSE-IR®



ACROMA-QS®



LONGPULSE®



PRODEEP®



GOSMOOTH®



DUALMODE®



ATHENA®



INLIFT®

## DUALMODE

- New 12-mm collimated spot with a pulse time of 200 us and up to 10 Hz of repetition rate for minimally ablative treatments;
- New 8-mm fractional spot with smooth pulse for treatments in the perioral and periorbital regions, broadening the usability of the inLift mode for wrinkles and skin tightening in non-mucous membrane regions;
- Twice the repetition rate for ATHENA® and inLift®, ensuring much faster treatment.



## IPL-SQ

- New dual-band 390-510/750-1200 nm filter to treat active acne, vitiligo and psoriasis;
- DYNAMICS® mode with repetition rate of up to 3 Hz for in-motion treatments in extensive areas and different types of lesions;
- Anti-scattering protection coupled to the sapphire, increasing comfort and safety during the application;
- Power management system integrated to the ZYE platform.



## longpulse

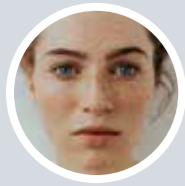
- Increased fluency in the 3- and 6-mm spots in DYNAMICS mode: up to 45 J/cm².







**ZYE ALEX: GOLD STANDARD IN HAIR REMOVAL**  
WITH OPTIONS THAT ADD NEW TREATMENTS



**DYNAMICS® OPERATING MODE FOR PEELING**

• **DYNAMICS®** mode with short pulses of 0.25 to 1 ms for dynamic peeling, acting efficiently in the treatment of freckles, spots, poikiloderma and rosacea.



**HAIR REMOVAL WITH LONG-LASTING RESULTS**

• In addition to incorporating the global gold standard wavelength, ZYE ALX is capable of delivering up to 55 J of energy, which in practice allows the use of more fluent beams and shorter pulse times, offering a treatment option with a reduced number of sessions.



**COMFORTABLE AND SAFE HAIR REMOVAL**

• In addition to offering a highly homogeneous beam without localized overheating points, **COOL-&-CLEAR®** technology keeps skin cool during the shots.



**THE FASTEST HAIR REMOVAL METHOD**

• **ULTRA SPEED** mode: containing an 18-mm spot and covering an area up to 25% larger and with a repetition rate of 3 Hz, ZYE ALX is one of the fastest hair removal systems in the world.

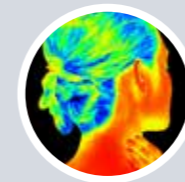


**ZYE YAG: POWER AND VERSATILITY**  
EFFECTIVE RESULTS WITH MAXIMUM SAFETY



**VERSATILITY, WITH 3 OPERATING MODES**

• **DYNAMICS®** mode with short pulses of 0.25 to 1 ms for onychomycosis and LASER toning; **LONGPULSE mode** with longer pulses of up to 100 ms for vascular lesions and hair removal in higher phototypes; and **INTENSE** mode with a continuous shot, for skin tightening in the neck and face.



**FOR LASER TONING, SKIN TIGHTENING AND ONYCHOMYCOSIS**

• Real-time skin temperature indicator and control with **ACCUSENSE®** – for onychomycosis, LASER toning and skin tightening.



**FOR VASCULAR LESIONS**

• **COOL-&-CLEAR®**: handpiece with a sapphire window cooled to 4°C and a spot diameter of 3 to 10 mm with a digital optical zoom system for vascular lesion treatment.






**FOR HAIR REMOVAL IN HIGHER PHOTOTYPES**

• Compatible with an 8-18 mm handpiece with **COOL-&-CLEAR®** technology for hair removal in higher phototypes (Fitzpatrick III-VI).








## NEW TREATMENT PROTOCOLS **STEP-BY-STEP**

### **ZYE SOFT PEELING** WITH NO DOWNTIME, FOR ALL PHOTOTYPES

-  ZYE ALX® with a 3-10/ML® handpiece for vascular lesions in the face and neck.
-  ProDeep® with an 8/100 mtz/cm² spot for localized treatment of deep wrinkles and different scar types.
-  DYNAMICS ALX®, 8-mm spot (3-10/ML®) for LASER thermal peeling on the face.



### **ZYE TIGHTENING** WITH NO DOWNTIME, FOR ALL PHOTOTYPES

-  DualMode® inLift® in the oral mucosa, furrows and lips for a volumizing and LASER lifting effect.
-  DualMode® 8-mm spot to smooth the eye and eyelid region.
-  INTENSE YAG® with a 15-mm handpiece (5-15/LT®) for skin tightening in the neck region.
-  Combine DYNAMICS YAG® with a 5-mm handpiece (5-15/LT®) for discreet vascular lesions.
-  DualMode® DYNAMICS with a 12-mm collimated spot for lightening spots and toning.



Z Y E

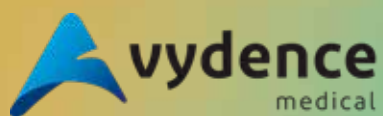


**ZYE TECHNICAL SPECIFICATIONS**

	<b>ZYE YAG</b>	<b>ZYE ALX</b>
WAVELENGTH	1,064 NM	755 NM
OUTPUT POWER	100 J	55 J
PULSE WIDTH	0.2 TO 300 MS	0.3 TO 300 MS
MAXIMUM REPETITION RATE	CONTINUOUS	20 HZ
REFRIGERATION SYSTEM	SAPPHIRE AND AIR REFRIGERATION	SAPPHIRE AND AIR REFRIGERATION
CONSUMABLES	NONE	NONE



# Z Y E . O N L I N E



VYDENCE® Medical  
Manufacturing Plant and R&D

Rua Aldo Germano Klein, 359. CEAT  
13573-470 São Carlos, SP. Brazil

VYDENCE® Medical  
Training Center

Av Fagundes Filho, 486, Sl 96. S Judas  
04304-000. São Paulo, SP. Brazil

VYDENCE® Medical  
U.S. Office

USA 3340 Hillview Avenue  
Palo Alto, CA. United States